

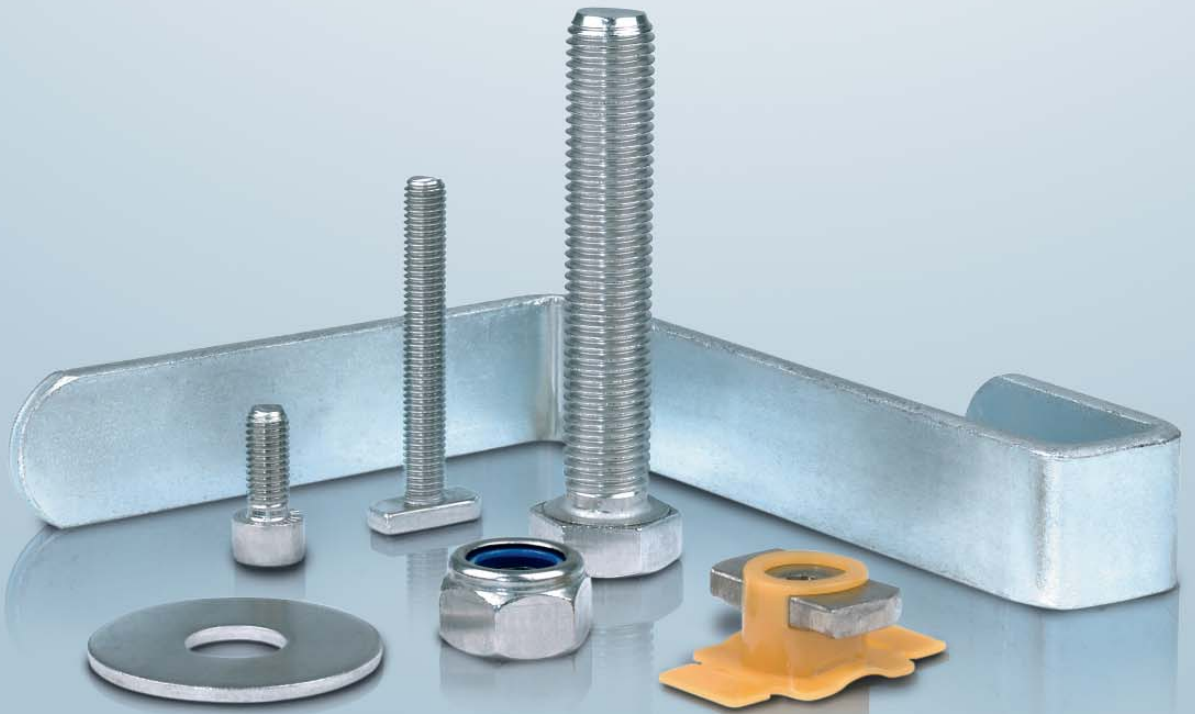


OTTO ROTH



Fastening TECHNOLOGY

Fastening elements
for solar units.



Solar technology that does what it promises to do.

Our comprehensive range for the solar industry not only includes standard parts but also a large number of customer-specific parts that are specially made. Here you can be sure of finding the right product and at a fair price.



The wide and in-depth range from Otto Roth makes it possible for us to solve any problem to do with joining elements and fasteners. We have the suitable item for any requirement.

Our range of solar products comprises nuts, bolts, screws and accessories together with hooks, plates, seals and much more. Moreover, we can offer each item in various materials, grades and surfaces.

Through using certified suppliers who are audited by us and as a result of our own constant quality checks, we guarantee a delivery quality of better than 99.95%. That is indeed a claim.

Our friendly and capable team of consultants would be glad to help you with any questions concerning fastening technology for solar units.

“For rapid and secure installation: the reliable fastening elements from Otto Roth.”



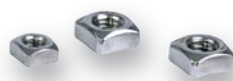
We make use of energy, raw materials and auxiliary materials in a responsible and environmentally-friendly way. We make a contribution to reducing the amount of CO₂ in the environment through our new photovoltaic unit on the roof of the head office building in Stuttgart, this having 802 modules and a rating of 140 kWp.

Of course the reliable fastening elements from Otto Roth were used in the installation of the modules on our own roof.


Hexagon nuts DIN 934

 Material: stainless steel A2
(AISI 304) / A4 (AISI 316)

\emptyset	M 6	M 8	M 10	M 12
	Article No.	Article No.	Article No.	Article No.
A2	172804	172805	172807	172808
A4	176406	176407	176408	176409
m = height	5,0	6,5	8,0	10,0
s = SW	10,0	13,0	17,0	19,0


Square nuts DIN 557

 Material: stainless steel A2
(AISI 304) / A4 (AISI 316)

\emptyset	M 6	M 8	M 10
	Article No.	Article No.	Article No.
A2	171540	171541	171542
A4	175411	392870	394882
m = height	5,0	6,5	8,0
s = SW	10,0	13,0	17,0


Hexagon flange nuts with serration DIN 6923

 Material: stainless steel A2
(AISI 304) / A4 (AISI 316)

\emptyset	M 8	M 10	M 12
	Article No.	Article No.	Article No.
A2	393832	394387	395882
A4	175862	397013	175861
m = height	8,0	10,0	12,0
s = SW	13,0	15,0	18,0


Prevailing torque type hexagon nuts with non-metallic insert, low type DIN 985

 Material: stainless steel A2
(AISI 304) / A4 (AISI 316)

\emptyset	M 6	M 8	M 10	M 12
	Article No.	Article No.	Article No.	Article No.
A2	173112	173111	173110	173116
A4	176611	176612	176613	176614
m = height	6,0	8,0	10,0	12,0
s = SW	10,0	13,0	17,0	19,0


Round coupler nuts

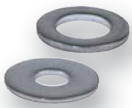
 Material: stainless steel A2
(AISI 304)

\emptyset	M 6	M 8	M 10	M 12
	Article No.	Article No.	Article No.	Article No.
l/mm = 20	174441	174486	174499	
l/mm = 25	174072	174487	174501	
l/mm = 30	174068	174061	174062	174517
l/mm = 40		174489	174063	174064
l/mm = 50		174490	174510	174065
d ₁ = outer- \emptyset	10,0	11,0	13,0	15,0



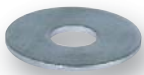
Hexagon coupler nuts
Material: stainless steel A2
(AISI 304)

\emptyset	M 6	M 8	M 10
	Article No.	Article No.	Article No.
l/mm = 25	174984	174557	174985
l/mm = 30	376028	174067	174563
l/mm = 40		362154	362155
s = SW	10,0	13,0	17,0



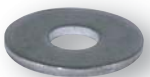
**Plain washers form A
(without chamfer) DIN 125**
Material: stainless steel A2
(AISI 304) / A4 (AISI 316)

For thread	M 6	M 8	M 10	M 12
	Article No.	Article No.	Article No.	Article No.
A2	171105	171106	171107	171108
A4	175004	175005	175006	175007
inner- \emptyset	6,4	8,4	10,5	13,0
outer- \emptyset	12,0	16,0	20,0	24,0
h = height	1,6	1,6	2,0	2,5



**Washers DIN 9021
outside \emptyset ~ 3 x nominal
thread \emptyset**
Material: stainless steel A2
(AISI 304) / A4 (AISI 316)

For thread	M 6	M 8	M 10	M 12
	Article No.	Article No.	Article No.	Article No.
A2	173908	173903	173904	173905
A4	176938	176916	176936	176939
inner- \emptyset	6,4	8,4	10,5	13,0
outer- \emptyset	18,0	24,0	30,0	37,0
h = height	1,6	2,0	2,5	3,0



Plain washers
Material: stainless steel A2
(AISI 304)

For thread	M 6	M 8	M 10
	Article No.	Article No.	Article No.
outer- \emptyset			
20	174504	174509	
25	174505	174506	174519
30	173995	173996	174755
40	174518	173997	174756
inner- \emptyset	6,4	8,4	10,5
h = height	1,5	1,5	1,5



**Washers for wood
constructions DIN 440**
Type:
R = round hole
Material: stainless steel A2
(AISI 304) / A4 (AISI 316)

For thread	M 6	M 8	M 10	M 12
	Article No.	Article No.	Article No.	Article No.
A2	171179	171163	171183	171180
A4	175408	175404	175406	175405
inner- \emptyset	6,6	9,0	11,0	14,0
outer- \emptyset	22,0	28,0	34,0	44,0
h = height	2,0	3,0	3,0	4,0


**Spring lock washers type B
(plane pattern) DIN 127**

 Material: stainless steel A2
(AISI 304) / A4 (AISI 316)

For thread	M 6	M 8	M 10	M 12
	Article No.	Article No.	Article No.	Article No.
A2	171122	171123	171124	171125
A4	175104	175105	175106	175107
inner-Ø	6,1	8,1	10,2	12,2
outer-Ø	11,8	14,8	18,1	21,1
h = height	1,6	2,0	2,2	2,5


Safety-washers type S

 Material: stainless steel A2
(AISI 304)

For thread	M 6	M 8	M 10	M 12
	Article No.	Article No.	Article No.	Article No.
A2	350383	350384	350385	393710
inner-Ø	6,4	8,4	10,5	13,0
outer-Ø	10,0	13,0	16,0	18,0
h = height	0,7	0,8	1,0	1,1


**EPDM-sealing washers
(black) for dowel screws**

For dowel screws	M 8	M 10	M 12
	Article No.	Article No.	Article No.
	398527	395883	398528

**Hexagon head wood screws
DIN 571**

 Material: stainless steel A2
(AISI 304)


Ø	6	8	10	12
	Article No.	Article No.	Article No.	Article No.
l/mm = 40	171618	171622	171651	
l/mm = 50	171615	171603	171620	171610
l/mm = 60	171637	171616	171623	171633
l/mm = 70	171624	171619	171611	171705
l/mm = 80	171626	171629	171601	177670
l/mm = 90	171638	171630	171634	171614
l/mm = 100	171627	171631	171613	171612
l/mm = 120	171628	171698	171643	171701
l/mm = 140	171733	171734	171604	171702
l/mm = 160		171745	171606	171703
b = thread	length min. 0,6 l			
k = head height	4,0	5,5	7,0	8,0
s = SW	10,0	13,0	17,0	19,0



**Hexagon head screws
fully threaded DIN 933**

Material: stainless steel A2
(AISI 304)

\varnothing	M 6	M 8	M 10	M 12
	Article No.	Article No.	Article No.	Article No.
l/mm = 16	172687	172678	172691	172648
l/mm = 20	172613	172623	172634	172649
l/mm = 25	172614	172624	172636	172650
l/mm = 30	172615	172625	172637	172651
l/mm = 35	172616	172626	172638	172652
l/mm = 40	172617	172627	172639	172653
l/mm = 45	172688	172628	172640	172654
l/mm = 50	172673	172629	172641	172655
l/mm = 60	172618	172631	172643	172657
l/mm = 70	172677	172680	172681	172659
l/mm = 80	172683	172632	172644	172661
k = head height	4,0	5,3	6,4	7,5
s = SW	10,0	13,0	17,0	19,0



**Hexagon head screws
fully threaded DIN 933**

Material: stainless steel A4
(AISI 316)

\varnothing	M 6	M 8	M 10	M 12
	Article No.	Article No.	Article No.	Article No.
l/mm = 16	176320	176391	176397	176489
l/mm = 20	176314	176324	176335	176346
l/mm = 25	176315	176325	176336	176347
l/mm = 30	176316	176326	176337	176348
l/mm = 35	176317	176327	176367	176361
l/mm = 40	176318	176328	176338	176349
l/mm = 45	176390	176329	176372	176363
l/mm = 50	176319	176330	176339	176350
l/mm = 60	176375	176332	176341	176351
l/mm = 70	176433	176377	176342	176352
l/mm = 80	177681	176389	176343	176353
k = head height	4,0	5,3	6,4	7,5
s = SW	10,0	13,0	17,0	19,0



**Threaded plates type 41/41
with fixing help M8**

Material	Fixing help yellow	Fixing help grey
	Article No.	Article No.
stainless steel A2 (1.4301)	397083	398236
steel, zinc plated	395715	398246



T-head bolts

Material: A2-70 / zinc plated

We can supply various types on request.


Hexagon socket head cap screws DIN 912

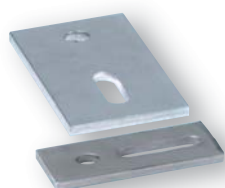
Material: stainless steel A2 (AISI 304)

Ø	M 8		M 10	
	Article No.		Article No.	
l/mm = 14	172371			
l/mm = 16	172175		172373	
l/mm = 20	172116		172126	
l/mm = 25	172117		172127	
l/mm = 30	172118		172128	
l/mm = 35	172119		172129	
l/mm = 40	172120		172130	
l/mm = 45	172121		172146	
l/mm = 50	172122		172147	
l/mm = 60	172124		172131	
l/mm = 70	172244		172166	
l/mm = 80	172191		172167	
l/mm = 90	172115		172189	
k = head height	8,0		10,0	
s = SW	6,0		8,0	


Hexagon socket head cap screws DIN 912

Material: stainless steel A4 (AISI 316)

Ø	M 8		M 10	
	Article No.		Article No.	
l/mm = 16	175993		175987	
l/mm = 20	175933		175942	
l/mm = 25	175934		175943	
l/mm = 30	175935		175944	
l/mm = 35	175936		175945	
l/mm = 40	175937		175946	
l/mm = 45	175985		175947	
l/mm = 50	175962		175975	
l/mm = 60	175938		175960	
l/mm = 70	175939		175949	
l/mm = 80	175940		175950	
l/mm = 90	175977		176010	
k = head height	8,0		10,0	
s = SW	6,0		8,0	


Adapter sheets

Material: stainless steel A2 1.4301 (AISI 304)

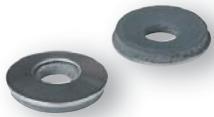
Measurement	82 x 30 x 5		82 x 40 x 5	
	Article No.		Article No.	
1 round hole 11 and 1 slot for M 10	398512		397833	
1 round hole 13 and 1 slot for M 12	351512		397834	



Mushroom head square neck bolts DIN 603

Material: stainless steel A2 (AISI 304)

Ø	M 8		M 10	
	Article No.		Article No.	
l/mm = 20	177673		171665	
l/mm = 25	171657		171659	
l/mm = 30	171636		171660	
l/mm = 35	171640		171662	
l/mm = 40	177739		171661	
l/mm = 45	171710		171663	
l/mm = 50	171675		171654	
l/mm = 60	171641		171664	
l/mm = 70	171679		171666	
l/mm = 80	171656		171683	
k = head height	4,88		5,38	
dk=head-Ø	20,65		24,65	



Sealing washers with EPDM

Material: stainless steel A2 (AISI 304) + EPDM

Inner-Ø	6,8		8,4		10,5	
	Article No.		Article No.		Article No.	
outer-Ø						
16	506149		362005			
19	506150		392497			
22	506151		506153			
25	506152		362006		362801	
29	506178		506185		506186	



Hexagon socket head cap screws (similar DIN 912) with serration

Material: stainless steel A2 (AISI 304)

Ø	M 8		Ø	M 8	
	Article No.			Article No.	
l/mm = 20	397431		l/mm = 45	377440	
l/mm = 25	396936		l/mm = 50	397441	
l/mm = 30	397437		l/mm = 55	394168	
l/mm = 35	397438		k = head height	8,0	
l/mm = 40	397439		s = SW	6,0	

Dowel screws

Type: standard

 Material: stainless steel A2
(AISI 304)


Ø	M 6	M 8	M 10	M 12
	Article No.	Article No.	Article No.	Article No.
l/mm = 50	177984	177975		
l/mm = 60	177986	177780		
l/mm = 70	174986	350532		
l/mm = 80	174987	177976	178084	
l/mm = 100	174988	178083	177979	174997
l/mm = 120	177992	177981	177980	174998
l/mm = 140	174989	174993	178977	174999
l/mm = 160	174992	174994	174674	174582
l/mm = 180	178143	178946	177978	174583
l/mm = 200		174678	174995	174688
l/mm = 220			178079	174996
l/mm = 250				178146
l/mm = 300				178147
l/mm = 350				178148

Dowel screws

 Type: with hexagon SW 7
(M10) and SW 9 (M12)

 Material: stainless steel A2
(AISI 304)


Ø	M 10 SW7	M 12 SW9
	Article No.	Article No.
l/mm = 200	178114	178157
l/mm = 250	178155	178158
l/mm = 300	178156	395751

Dowel screws complete assembled

 with hexagon flange nuts with serration DIN 6923 and 1 x EPDM-sealing washer
 Type: with hexagon SW 7 (M10) and SW 9 (M12)


Material: stainless steel A2 (AISI 304)

Ø	M 10 SW7	M 12 SW9
	Article No.	Article No.
l/mm = 200	391702	
l/mm = 250	398540	
l/mm = 300	398664	398627



Security screws

Material: stainless steel A2 (AISI 304)

We can supply various types on request.



Roof hooks

Material: stainless steel A2 1.4301 (AISI 304)



Type	Measurement	Article No.
Roof hooks Vario	148 x 60 x 169 x 6, h = 135 - 148	398121
Roof hooks Standard	148 x 50 x 165 x 5, h = 131	398122



Roof hooks

Material: stainless steel A2 1.4301 (AISI 304)

Type	Measurement	Article No.
Plain tiles	360 x 180 mm	391179
Roof hooks plain tile	30 x 5 mm, slot Ø 9 mm	391198



Countersunk head chipboardscrews

with internal serration, partial threaded

Material: stainless steel A2 (AISI 304)

Ø	6,0	8,0
	Article No.	Article No.
l/mm = 50	174766	
l/mm = 60	174734	360401
l/mm = 70	174733	370607
l/mm = 80	174749	360406
l/mm = 90	174735	360402
l/mm = 100	174736	360403
l/mm = 110	177893	
l/mm = 120	174737	360404
l/mm = 140	177885	360405
l/mm = 150	177871	
l/mm = 160	178131	360408
Drive	TX 25	TX 40



Raised countersunk head wood screws
with sealing washer 15mm
Material: stainless steel A2
(AISI 304) copper plated

\emptyset	4,5
Article No.	
l/mm = 25	174409
l/mm = 35	174410
l/mm = 45	174411
l/mm = 55	174412
l/mm = 65	174413
Addendum	2,35
Head- \emptyset	8,30



Raised countersunk head wood screws
with sealing washer 15 mm
Material: stainless steel A2
(AISI 304)

\emptyset	4,5
Article No.	
l/mm = 25	174401
l/mm = 35	174402
l/mm = 45	174403
l/mm = 55	174405
l/mm = 65	174406
k = head height	2,35
dk = head \emptyset	8,30



Raised countersunk head wood screws
with sealing washer 19mm
Material: stainless steel A2
(AISI 304) copper plated

\emptyset	4,5
Article No.	
l/mm = 25	174420
l/mm = 35	174421
l/mm = 45	174422
Addendum	2,35
Head- \emptyset	8,30



Raised countersunk head wood screws
with sealing washer 19mm
Material: stainless steel A2
(AISI 304)

\emptyset	4,5
Article No.	
l/mm = 25	174414
l/mm = 35	174415
l/mm = 45	174416
l/mm = 55	174417
l/mm = 65	174418
l/mm = 80	174419
Addendum	2,35
Head- \emptyset	8,30



Flat head screws Torx Tx 40

Material: stainless steel A2
(AISI 304)

Measurement	
	Article No.
8 x 80/40	174967
8 x 100/80	174979
8 x 120/60	174980



Self tapping screws type A

with EPDM sealing washer
16 mm

Material: stainless steel A2
(AISI 304)

Ø 6,5	
	Article No.
l/mm = 16	506033
l/mm = 19	506166
l/mm = 25	506035
l/mm = 32	506036
l/mm = 38	506037
l/mm = 45	506038
l/mm = 50	506039
l/mm = 60	506015
l/mm = 65	506040
l/mm = 70	506047
l/mm = 75	506041
l/mm = 80	506173
outer-Ø	16,0
SW	3/8"



Self tapping screws type BZ

with EPDM sealing washer
16 mm

Material: stainless steel A2
(AISI 304)

Ø 6,3	
	Article No.
l/mm = 16	506162
l/mm = 19	506161
l/mm = 25	506049
l/mm = 32	506050
l/mm = 38	506051
l/mm = 45	506063
l/mm = 50	506052
l/mm = 60	506053
l/mm = 65	506165
l/mm = 70	506171
l/mm = 75	506055
l/mm = 80	506064
outer-Ø	16,0
SW	3/8"



Shear nuts

Material: stainless steel A2
(AISI 304)

Ø	M 8	M 10
	Article No.	Article No.
	360473	171835

General Terms and Conditions for Business Customers

Terms and conditions of delivery and payment

These terms and conditions of delivery and payment are valid in their current version (dated 8/2001) for all our present and future offers, contracts and deliveries. They shall be agreed with our order confirmation and no later however than when delivery is taken of the goods. Individual agreements always require our written acceptance, even in the implementation of the contract. We shall not contradict a customer's terms and conditions of purchase and / or general terms and conditions of business. We shall be bound by them, even in those cases in which we do not expressly contradict them on receipt. Otherwise our contracts shall be subject to German law.

I. Offer and conclusion of a contract

- Our offers shall be non-binding and subject to change without prior notice, unless we make written assurances to the contrary. Our offers shall remain subject to prior sale.
- In the event of being unable to deliver, we shall notify our customer immediately and if necessary, we shall refund him any counter-performance he may already have made e.g. down-payments.

II. Prices, terms and conditions of payment, default and its consequences

- Our prices shall be in euros ex Stores / Works plus the respective value added tax, freight and packing costs.
- Our invoices are payable in euros within 14 days with a 2% discount or within 30 days net from the invoice date with the earliest notification being when the goods have been dispatched or when they are ready for delivery. Invoices for less than €100.00 are payable net in full immediately. The date on which a payment is received by us shall determine whether it has been paid on time.
- If the period allowed for payment is exceeded we may, irrespective of other rights, charge interest at normal bank rates, but at least 5% above the base rate of the European Bank at that time and we are entitled to demand the normal securities. All our claims from the business relationship shall become payable immediately if these terms and conditions of payment are not complied with, or if we become aware of circumstances which, in our opinion, are capable of substantiating doubt in the creditworthiness of the customer. We shall fulfil outstanding delivery obligations in such cases only against cash payment in advance. If we do not receive this within a reasonable period having requested it, we shall be entitled to withdraw from all or from part of the contract and to demand compensation for damages on account of non-fulfilment, without having to furnish proof, amounting to 5% of the order value, but no less than €30.00. If we can prove that our loss is greater than €30.00 we shall still be entitled to assert a claim for this higher amount of damages.
- In addition to this, we are entitled to forbid the goods from being resold and processed (Cf. „Retention of title“ IV.). Then the customer shall be obliged to procure us immediate possession at his expense. He shall allow us here and now to enter his business premises to take away the goods in the cases described.
- Offsetting with a counter claim is only allowed if the counter-right is not contested, or if there is a final and conclusive title to the counter-right.

III. Delivery period

- The delivery period shall only be agreed as an approximation and non-binding. It will begin on the day shown as the date on our order confirmation, but not however, before all the details of carrying out the contract have been clarified.
- If delivery is early, this shall be the point in time which is valid.
- Partial deliveries are allowed whereby each partial delivery shall count as a separate transaction.

- We shall reserve the right to have the deliveries delivered to us correctly and on time.
- The delivery period shall be extended as appropriate, also in the event of default in delivery, as well as examples of force majeure, such as fires, strikes and lock-outs or import and export restrictions imposed by the national government. In such cases we shall be entitled to withdraw from part or from the entire contract which has not been fulfilled.

IV. Retention of title

- The delivered goods shall remain our property even if payments have been made towards specific accounts until the price and all accounts from the business relationship and all other accounts associated with it, current or future have been paid in full, even if it has been agreed that they shall be kept in safe keeping by the customer free of charge.
- The customer is not entitled to pledge or to transfer ownership of goods subject to the retention of title and / or the accounts assigned to us as a security (clause no. 4). The customer may process and sell on the goods, but only in the course of his proper business transactions.
- The goods subject to the retention of title shall be processed for us, but without placing us under an obligation however. This means that the customer shall not acquire title in accordance with § 950 of the German Civil Code.
- If our goods subject to the retention of title are mixed with objects which belong to the customer or which have otherwise been supplied to him under a simple retention of title in accordance with § 450 of the German Civil Code, we shall acquire sole title to the processed product.
- If our goods are processed together with goods which were supplied to the customer by other means with the legal consequences of § 950 of the German Civil Code – extended reservation of title – excluded, we shall acquire the co-ownership of the new thing in proportion to the invoice value of our goods subject to the reservation of title to the invoice value of the other items.
- If the customer sells our goods, regardless of their condition, properly and safeguards our security rights, to a third party, he hereby assigns the account accruing to him from the transaction plus secondary rights to the extent of clause 5 to us. At our request, the customer is obliged to notify this third party of the assignment and to pass the information over to us, which, in our opinion, is necessary to assert our rights, as well as to hand out the documents relating to such information.
- If, in addition to our goods being subject to the reservation of title, the processed product only contains the customer's items or goods otherwise supplied to him subject to the simple reservation of title in § 455 of the German Civil Code, the entire account will be assigned to us. In the event of a concurrence with an assignment in advance, as a result of an reservation of title extended by other means, that is if the legal consequences of § 950 of the German Civil Code are excluded, we shall be entitled to a fraction of the account in accordance with no. 3. b).
- The customer shall also hereby assign to us the accounts which he acquires

against a third party as a result of incorporating the goods into a property for the amount of our account as a security.

- Amounts received towards assigned accounts are to be kept in safe keeping separately until they are remitted to us.
- Improper treatment of our goods shall entitle us to proceed as if payment was in default (clause. II, nos. 3. and 4.).
- We are to be notified immediately and by the quickest means e.g. by fax, of third party seizures of our goods, such as for example pledging them and handing over all documentation. We are also to be notified as above of all the measures necessary to avert such seizures.
- If the securities existing as a result of the above reservation of title exceed our accounts overall by more than 20% for a period which is not temporary, we shall, upon request, be prepared to release consignments paid for in full at our choice.

V. Packing and dispatch

- Packing can be provided on loan or invoiced, at our discretion. In the latter case it can, as a matter of principle, only be taken back following prior agreement for a full or partial credit at our discretion.
- The goods shall be dispatched by handing them over to the carrier of freight forwarder, but no later however when the goods leave our stores / works and at the cost and risk of the customer. This shall also apply in those cases in which we forward the goods with our own or third party transport.
- The route of dispatch and method of transportation is at our discretion, unless the customer has passed over written freight instructions. We shall not have any liability whatsoever for selecting the cheapest method of dispatch, for example.
- Carriage costs paid by us shall only be regarded as having been paid out on behalf of the customer. Additional expenses for quick methods of dispatch, e.g. rail express or air freight shall be for the account of the customer, and to be more precise, even in those cases in which we are obliged to pay the carriage in an individual case as a result of a special agreement.

VI. Discrepancies in the condition and quantity of the delivered goods

- Our goods are subject to the general requirements of the DIN 267 / ISO 8992 standards, but we reserve the right to common quality deviations in dimensions and characteristics, provided that we have not given express assurances of this. Samples provided by us will only show the average condition of the goods on a non-binding basis.
- If we manufacture special parts in accordance with information supplied by the customer, he alone will be responsible for third party proprietary rights not being breached. In the event that a claim is asserted against us, the customer shall exempt us from all claims and will bear all the costs accrued by us and subject to the assertion of other rights, such as those for the performance of compensation for damages on account of non-fulfilment.
- Excess or short deliveries of up to 10% of the ordered amount shall be regarded as being in compliance with the contract.

VII. Notification of defects and warranty, limitation of compensation claims for damages

- It will be the customer and not us who will be obliged to check whether the goods to be delivered are of the level of technology required for his intended use.
- Defects on account of the condition of the goods or the volume of goods delivered are to be notified to us in writing straightaway following receipt of the goods at the destination and no later than 10 days thereafter, and to be more precise, prior to using them or delivering them on to third parties. It will be the point in time of dispatch or the point in time at which notification is made that the goods are ready for dispatch which shall determine whether we have delivered the goods properly.
- If notifications of defects are justified and submitted on time, the goods shall, at our discretion, be exchanged or taken back in return for a refund or credit of the agreed counter-performance or the reduction in value refunded. Instead of this we shall also be entitled to carry out a repair. If the volume delivered is too low, we shall be allowed to make a subsequent delivery to make up the shortage.
- All warranty claims shall lapse if the customer refuses to allow us the opportunity to check the defect ourselves, in particular if in our opinion he does not make all the goods or part of them available or return them to us without delay. However, goods about which a complaint has been made may only be sent back to us with our consent.
- Compensation claims for damages e.g. as a result of a breach of our duty to supply a replacement or carry out a repair, contractual secondary duties or as a result of use being to blame when the contract is signed as well as a result of illegal acts are ruled out if they are not directly attributable to loss of loss; personal injury and physical harm or on our liability under the German Product Liability Act, provided that they are not the result of intent of grossly negligent conduct.

VIII. Place of fulfilment and place of jurisdiction

- The place of fulfilment is the headquarters of our Company, which is contractual partner of the customer.
- The place of jurisdiction is, at our discretion, the headquarters of the customers company or the headquarters of our company.

IX. Partial invalidity

- Should individual provisions of these terms and conditions or in the contract be invalid, the validity of the remaining provisions shall not be affected as a result.

Date 08/2001
Otto Roth GmbH & Co KG

The Otto Roth Group. Always in your area. Always ready to help.

Our large logistics centre in Stuttgart-Weilimdorf was designed for round the clock operation. Thanks to the completely automated high bay and small parts warehouse that is controlled fully automatically with barcodes, incoming orders can be processed especially quickly.

We are always in your vicinity. Each of our branches has a warehouse of its own and is connected with our Germany-wide logistics network.



BERLINER SCHRAUBEN



HEINZ BERGMANN

Otto Roth GmbH & Co KG

Rutesheimer Straße 22
70499 Stuttgart
Phone: +49 (0) 711.13 88-0
Fax: +49 (0) 711.13 88-233
info@ottoroth.de
www.ottoroth.de

Werk Buchen/Odenwald

Siemensstraße 16
74722 Buchen
Phone: +49 (0) 62 81.52 07-0
Fax: +49 (0) 62 81.52 07-17
buchen@ottoroth.de

Niederlassung Augsburg

Zusamstraße 28
86165 Augsburg
Phone: +49 (0) 821.2 72 93-0
Fax: +49 (0) 821.2 72 93-15
augsburg@ottoroth.de

Niederlassung Chemnitz

Chemnitztalstraße 155
09114 Chemnitz
Phone: +49 (0) 371.4 7153-0
Fax: +49 (0) 371.4 7153-33
chemnitz@ottoroth.de

Niederlassung Nürnberg

Bräunleinsberg 54
91233 Neunkirchen/Sand
Phone: +49 (0) 91 23.94 00-0
Fax: +49 (0) 91 23.94 00-15
nuernberg@ottoroth.de

Berliner Schrauben GmbH & Co KG

Prinzenstraße 86
10969 Berlin
Phone: +49 (0) 30.61 67 96-0
Fax: +49 (0) 30.61 67 96-15
berlin@berlinerschrauben.de
www.berlinerschrauben.de

Niederlassung Oer-Erkenschwick

Industriestraße 2
45739 Oer-Erkenschwick
Phone: +49 (0) 23 68.91 96-0
Fax: +49 (0) 23 68.91 96-15
oer-erkenschwick@berlinerschrauben.de

Niederlassung Münster

Sandfortskamp 19-21
48159 Münster
Phone: +49 (0) 251.9 24 08-0
Fax: +49 (0) 251.9 24 08-15
muenster@berlinerschrauben.de

Heinz Bergmann GmbH & Co. KG

Max-Nonne-Straße 49
22419 Hamburg
Phone: +49 (0) 40.180 7117-0
Fax: +49 (0) 40.180 7117-21
info@heinz-bergmann-schrauben.de
www.heinz-bergmann.com

